

**AERODROME/  
HELIPORT  
CHART - ICAO**

34°00'24.13"S  
022°22'27.41"E

**ELEV 648'**  
**GUND 104.1'**

GEORGE ATIS 126.225  
ALPHA OSCAR (APN) 122.65  
TWR 118.90  
APP 128.20

**GEORGE  
FAGG**

**ELEV, ALT & HGT IN FEET  
DIST IN METERS  
BRG ARE MAG**

**NOTE**

1. Contact Apron prior to TWR on start-up.
2. After Hours Remote RWY Lights:  
5 clicks on FREQ 118.9 MHZ switches  
lights ON, RWY and TWY lights switches  
OFF after 15 minutes.

**CAUTION**

1. Bird activity on aerodrome.
2. Pilots are to exercise caution and must  
familiarise themselves with the TWY  
designations.
3. RWY 11/A1 intersection TORA 1865.



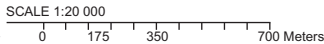
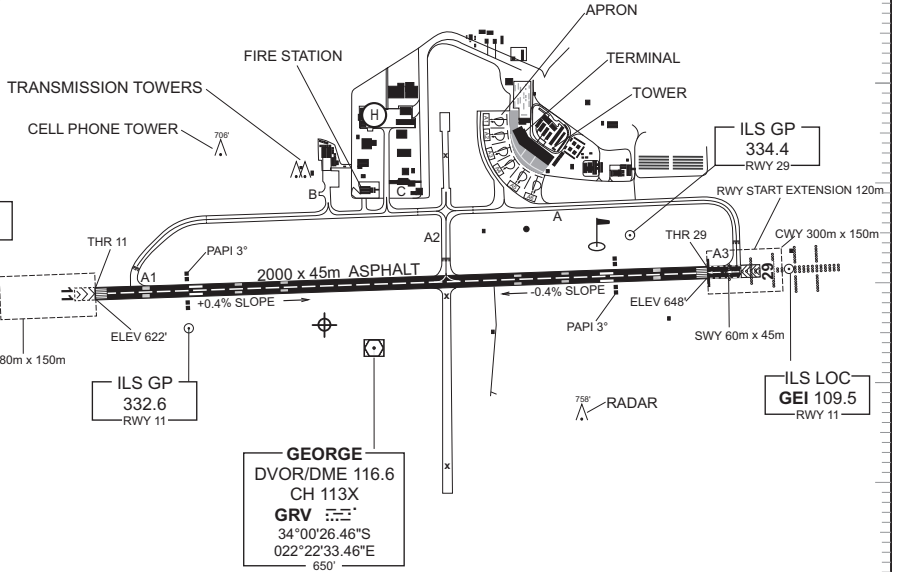
**ANNUAL RATE  
OF CHANGE 0°9' W**

34°  
00'S

34°  
00'  
30'S

34°  
01'  
00'S

CHANGE: True/Magnetic Arrows and GUND



22°22'E

22°22'30"E

22°23'E

22°23'30"E

**RWY LIGHTING**

RWY	ALS	PAPI	RTHL	REDL	RENL
11	NIL	3°	GREEN	WHITE	RED
29	PALS CAT II	3°	GREEN	WHITE	RED

OTHER: OBST & TWY

**PHYSICAL CHARACTERISTICS**

RWY	DIRECTION	THR COORDINATES	THR ELEVATION	TORA (m)	TODA (m)	ASDA (m)	LDA (m)	SWY	CWY	SLOPE	SURFACE	BEARING STRENGTH	CIRCUIT
11	088°(T)	34°00'21.30"S 022°21'59.01"E	622'	2000	2300	2060	2000	60m	300m	0.004 U	ASPH	PCN 49/F/B/Y/U	R/H
29	268°(T)	34°00'18.83"S 022°23'16.90"E	648'	2120	2500	2120	2000	0m	380m	0.004 D			L/H

EFF: 11 OCT 18